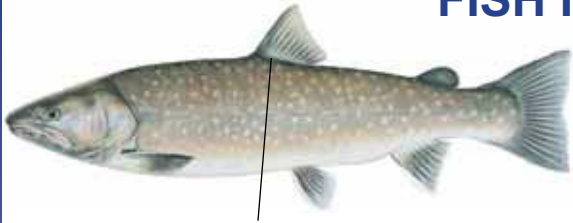
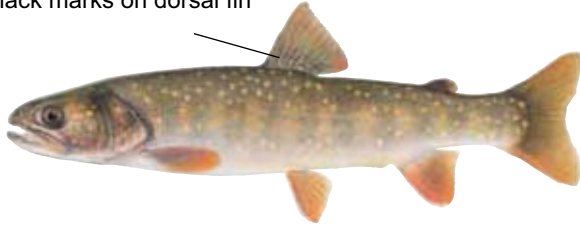


FISH IDENTIFICATION



No black marks on dorsal fin



BULL TROUT **No Harvest Allowed**

Olive green with brown above and on sides, shading to white on belly. Lacks wormlike markings as in BROOK TROUT. Upper body with yellow spots, sides with red or orange spots. No bluish halos around spots and white borders on fins less distinct than in BROOK TROUT. Tail is slightly forked. NATIVE. See page 73. *Illustration by Joseph Tomelleri.*



CUTTHROAT TROUT

Red to orange slashes on underside of lower jaw. Body color variable. Back steel gray to olive green. Sides may be yellow brown with red or pink along belly. Spotting more closely grouped toward tail. May spawn in wild with rainbow. NATIVE. *Illustration by Joseph Tomelleri.*

Bluish halos



White border

BROOK TROUT

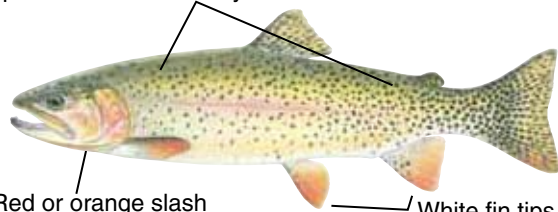
Dark green or blue black on back, to white on belly. Belly and lower fins may turn brilliant red in spawning males. Upper body and dorsal fin with mottled or wormlike markings. Sides with pale spots and reddish spots which may have bluish rings around them. Lower fins, including tail, have distinct white leading edge. Tail square, or only slightly forked. INTRODUCED. *Illustration by Joseph Tomelleri.*



RAINBOW TROUT

Body color variable. May be silvery in lakes and reservoirs. Back olive to greenish blue, belly white to silvery. Sides may show red or pink streak, white tip on pelvic (belly) and anal fin usually evident. Irregular spots on back, sides, head, dorsal fin and tail. NATIVE. *Illustration by Joseph Tomelleri.*

Spots over most of body and head



Red or orange slash

White fin tips

(South Fork Snake River)

HYBRID CUTTHROAT/RAINBOW TROUT

Regulations have been modified to allow harvest of trout hybrids. Anglers should use the following guidelines to differentiate hybrids from cutthroat.

General: Cutthroat/rainbow trout hybrids display variable color and markings, representing a range of shared characteristics from rainbow and cutthroat trout. All hybrids show spotting patterns similar to rainbow trout with spots more evenly distributed from head to tail and above and below the lateral line.

All drainages north of, and including the Salmon River: Westslope cutthroat/rainbow hybrids show a red or orange slash under the jaw that is incomplete and faint in coloration.

Snake River Drainage: Yellowstone cutthroat/rainbow trout hybrids in the Snake River drainage are identified by the presence of white fin tips. *Illustration by Joseph Tomelleri.*

Spots light gray

Deep fork



LAKE TROUT (MACKINAW)

Dark gray or gray green above, belly light gray to white. Irregular shaped light gray spots on back, sides, dorsal fin and tail. Pink or blue spots ABSENT. White borders on fins less distinct than in BROOK TROUT. Tail deeply forked. Inhabits only large, deep lakes. INTRODUCED. *Illustration by Joseph Tomelleri.*